

CAT 424 new unused 2024 multiple choice

Amount of previous owners

Attachments

Body type

Brand

Bucket capacity cm³

Cabin type

Certificates

Condition

Condition info/guarantee

Country

Delivery terms

Emission level

Engine

Engine manufacturer

Engine output hp

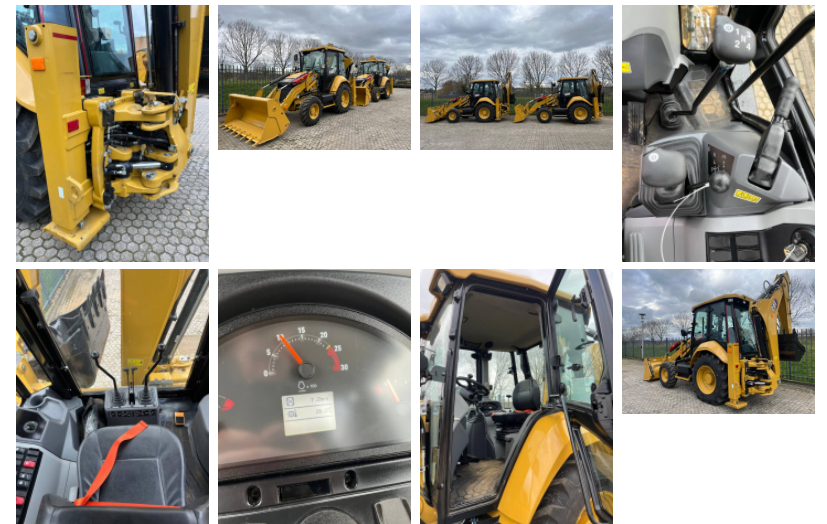
Front tyres remaining %

Full service history

General grade (1 min - 5 max)

Gross Weight kg

Inspection report



Internal stock no.
Latest inspection
Machine location
Manufacturing / Serial
number
Maximum lift capacity kg
Model
Model description
Options
Original colour
Other information

two (2) pcs x new unused Caterpillar
backhoe loader model 424 new unused GP
bucket front airsuspended driver seat GP
bucket with teeth rear original colour extra
worklights beacon radio CD player toolkit
Price ex works Haaften The Netherlands
each The Cat® 424 Backhoe Loader
delivers exceptional performance, superior
fuel efficiency and a comfortable, safe and
spacious operator station. The 424 features
the following: MORE FUEL EFFICIENT The
Cat® C3.6 engine meets BS-V CMVR
emissions standards, a step ahead of
current regulatory requirements ensuring
longevity in the market. The engine delivers
impressive peak torque of up to 424 N·m
from an optimised engine capacity of 3.6 L.



RIVERLAND
EQUIPMENT BV

RIVERLAND EQUIPMENT BV

Hertog Karelweg 21
NL 4175 LS Haaften
The Netherlands

T: +31 418 654000
F: +31 418 651623

E: info@riverlandequipment.com
E: sales@riverlandequipment.com

This provides high fuel efficiency with up to 20% fuel saving over the previous model when operated in the new Eco mode. **MORE PERFORMANCE** The design of the Parallel lift loader gives high breakout forces with capability for dozing and loading and increased dump height. All Wheel Drive supports with better traction in hilly and tough terrain. The iconic Cat excavator style boom on the backhoe enables reach over obstacles and better loading capability in narrow spaces. Robust stick design and 205 degrees of bucket rotation give a solid platform to deliver superior material retention and performance, even on tough job sites. This combined with the variable displacement hydraulic pump (132 L/min flow @ 2,200 rpm) provides faster implement speeds and efficiency. **MORE COMFORT AND SAFETY** The cabin is designed to meet ROPS (roll over protective structure) and FOPS (falling object protective structure), so the operator is protected. The stylish, spacious cabin gives excellent all-around visibility with fully integrated operator workstation including; suspension seat, clear information cluster and ergonomic controls. Opening side windows, door windows and large rear

window enhance operator comfort, while improved cab mountings and window and door seals lower in cab vibrations and noise. The machine hood is opened from a button inside the cab to prevent vandalism and braking effort is lower to improve safety and reduce operator

Output of the auxiliary hydraulics	l/min
Power type	
Product link	
Production country	
Rear tyres remaining	%
Registration number	
Top speed	km/h
Traction type	
Transport dimensions (LxWxH)	m
Tyre brand	
Year of manufacture	