

Caterpillar 352FL Ultra High Demolition.01

Amount of previous owners

Attachments

Brand Caterpillar

Bucket capacity cm³

Certificates EPA, CE

Condition Info/Guarantee

Country

Damaged

Delivery terms EXW

Dipper / stick length cm

Emission level

Engine

Engine Manufacturer

Engine output hp

Extra options New/unused

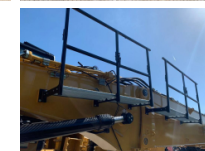
Full service history

General grade (1 min - 5 max) 5

Gross Weight kg

Inspection report

Internal stock no.



Latest inspection	
Machine Location	
Manufacturing / Serial number	
Model	352FL Ultra High Demolition.01
Model description	
Original colour	yes
Other information	Riverland Equipment BV offers you from stock : Caterpillar 352FL Ultra High Demolition excavator new unused Erops cabin with airconditioning and climate control airsuspended driverseat hydr kit for hydraulic adjustable undercarriage Falling Objects Guard roof-and front windowsscreen safety valves factory CE certified factory EPA certified Ultra High Demolition boom as 30 mtr with hammer shear rotation functions standard diggingboom with extra hydraulic functions for hammer shear rotation extra counterweight Pro Lec PME700 safely overload system transportcradles hydraulic tilting cabin automatic central greasing system camera system on the UHD boom incl screen in cabin waterspray sprinkler system with watertanks Total price ex works Haaften The Netherlands
Output of the auxiliary hydraulics	l/min



RIVERLAND EQUIPMENT BV

Hertog Karelweg 21
 NL 4175 LS Haaften
 The Netherlands

T: +31 418 654000

F: +31 418 651623

E: info@riverlandequipment.com

E: sales@riverlandequipment.com

Product link	
Production country	US
Registration number	
Track width	cm
Transport dimensions (LxWxH)	m
Undercarriage	100
Year of manufacture	2021