

Soilmec SR40 Drilling Rig Cat 325

Amount of previous owners

Attachments

Boom make

Brand

Cabin type

Carrier type

Certificates

Compression hours

Compressor make

Compressor output m³/min

Condition

Condition info/guarantee

Cooling system

Country

Delivery terms

Drill make

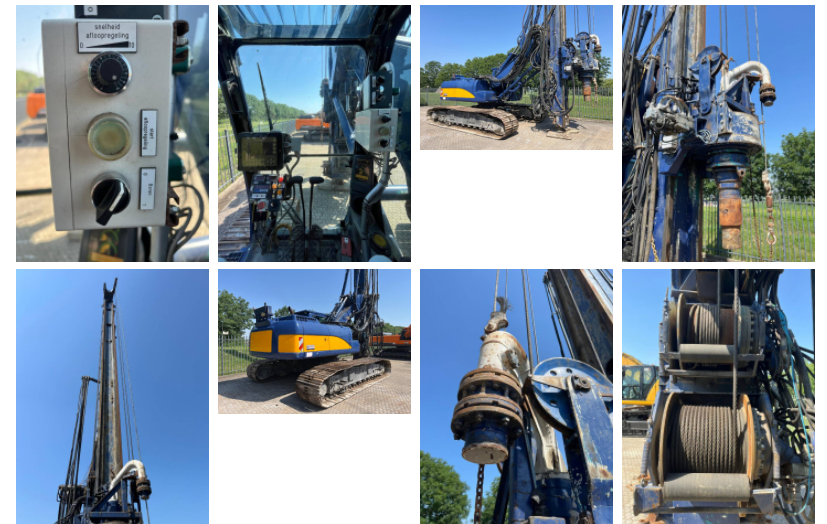
Dust collector make

Emission level

Engine

Engine manufacturer

Feed mechanism



Feed mechanism make
 Front tyres remaining %
 Full service history
 General grade (1 min - 5 max)
 Hole diameter
 Inspection report
 Internal stock no.
 Latest inspection
 Machine location
 Manufacturing / Serial number
 Model
 Model description
 Other information

Riverland Equipment BV offers you from stock: One x Soilmec SR-40 127A Drilling Rig based on Cat 325 power unit 2008 hours 12.819 (new Cat engine 3000 hours old) Pile depth 18.0 meter Maximum Kelly depth 55.0 meter Rotary head drill RD-160 Main winch Second winch Kelly winch Waterlevel display Pressure display Jeanlutz Taraloc Jeanlutz Memolec Hydraulic adjustable undercarriage (3.13 retracted 4.30 extracted) Including kellybar Extra counterweight LED work lights Climate control AC Electric refuel pump Cat C7.1



RIVERLAND EQUIPMENT BV
 Hertog Karelweg 21
 NL 4175 LS Haaften
 The Netherlands

ACERT 174kW Working weight 45.000 kg
Factory CE certified Factory EPA certified
Price Ex Works Haaften, the Netherlands
each EUR POR

T: +31 418 654000

F: +31 418 651623

E: info@riverlandequipment.com

E: sales@riverlandequipment.com

Percussion hours

Primary cyclone

Product link

Production country

Rear tyres remaining %

Rod handler make

Rod/pipe diameter

Shank lubrication make

Strike hours

Track make

Transport dimensions m
(LxWxH)

Transport weight kg

Type

Tyre brand

Tyre size and brand

Undercarriage

Year of manufacture