

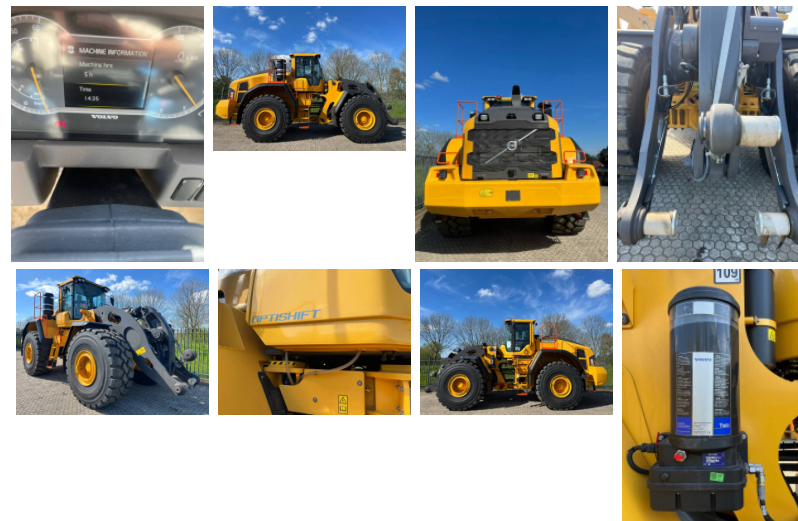
# Volvo L260H 2024 new unused CDC BSS axlecoolers 3rd hydr

- Amount of previous owners
- Attachments
- Body type
- Brand
- Bucket capacity cm<sup>3</sup>
- Cabin type
- Certificates
- Condition
- Condition Info/Guarantee
- Country
- Delivery terms
- Emission level
- Engine
- Engine Manufacturer
- Engine output hp
- Front tyres remaining %
- Full service history
- General grade (1 min - 5 max)
- Gross Weight kg



Inspection report  
Internal stock no.  
Latest inspection  
Machine Location  
Manufacturing / Serial  
number  
Maximum lift capacity  
kg  
Model  
Model description  
Original colour  
Other information

one [1] pc new unused Volvo L260H  
wheelloader year of manufacture 2024  
cabin with heated and airsuspended Volvo  
seat Volvo ACC Automatic Climate Control  
standard steering wheel Volvo hydr quick  
coupler function tires L4 VJT 29.5 CDC ( Comfort Drive Control ) BSS ( Boom  
Suspension System ) Optishift Caretrack  
GSM LED light package emergency steering  
extra hydraulic 3 rd valve Co Pilot with 10”  
screen incl reverse camera warning beacon  
LED DAB radio blue tooth kit mudguards full  
cover toolkit axle coolers emergency  
steering engine Volvo D13 stage V original  
colour made in Sweden factory CE certified  
mirrors electr and heated excl bucket Price  
ex works Haaften The Netherlands each



**RIVERLAND**  
EQUIPMENT BV

**RIVERLAND EQUIPMENT BV**

Hertog Karelweg 21  
NL 4175 LS Haaften  
The Netherlands

T: +31 418 654000  
F: +31 418 651623

E: [info@riverlandequipment.com](mailto:info@riverlandequipment.com)  
E: [sales@riverlandequipment.com](mailto:sales@riverlandequipment.com)

	Euro
Output of the auxiliary hydraulics	l/min
Power type	
Product link	
Production country	
Rear tyres remaining	%
Registration number	
Top speed	km/h
Transport dimensions (LxWxH)	m
Tyre brand	
Year of manufacture	